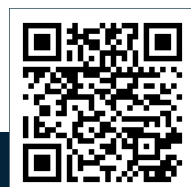
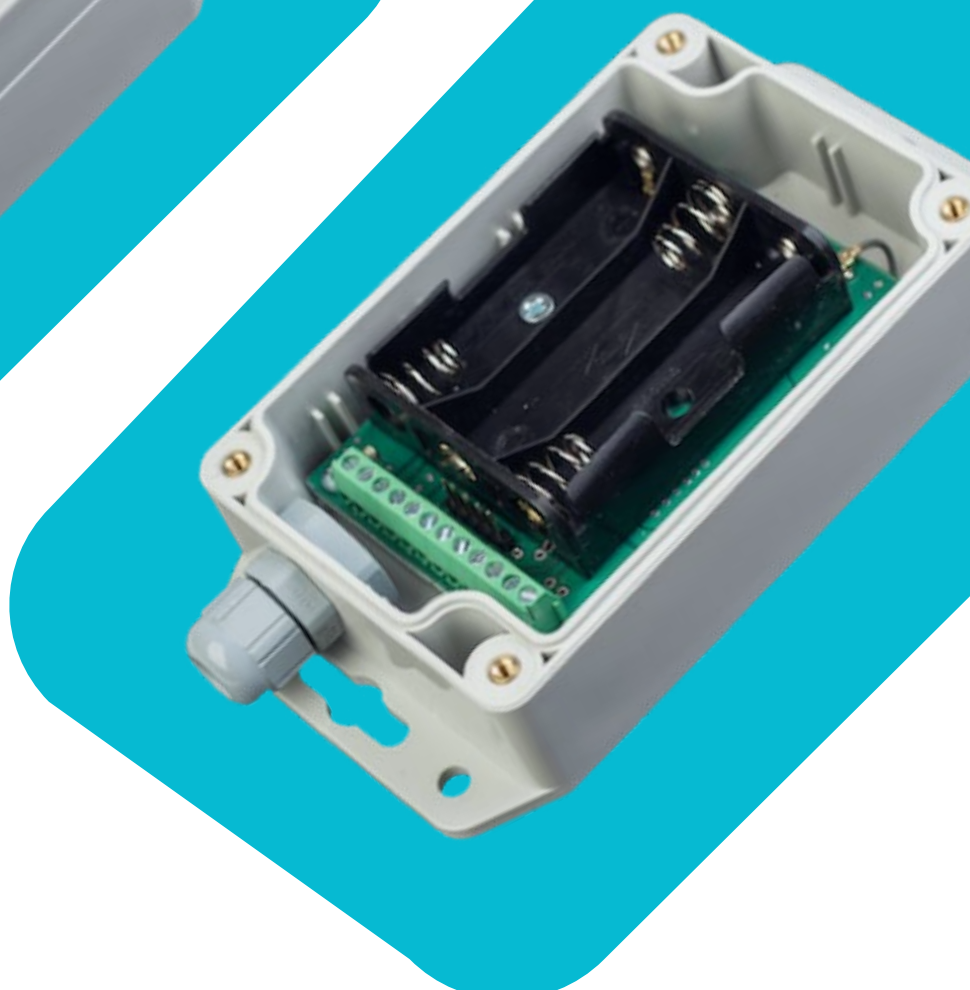




GSM Data Logger LPMDL-1101



GSM Data Logger

LPMDL-1101

LPMDL-1101 is a GSM/GPRS lowered data logger able to monitor pulse output meters and industrial sensors



Applicable for

- » **Electricity, gas and water**
consumption monitoring and control
- » **Pressure, temperature and humidity**
monitoring

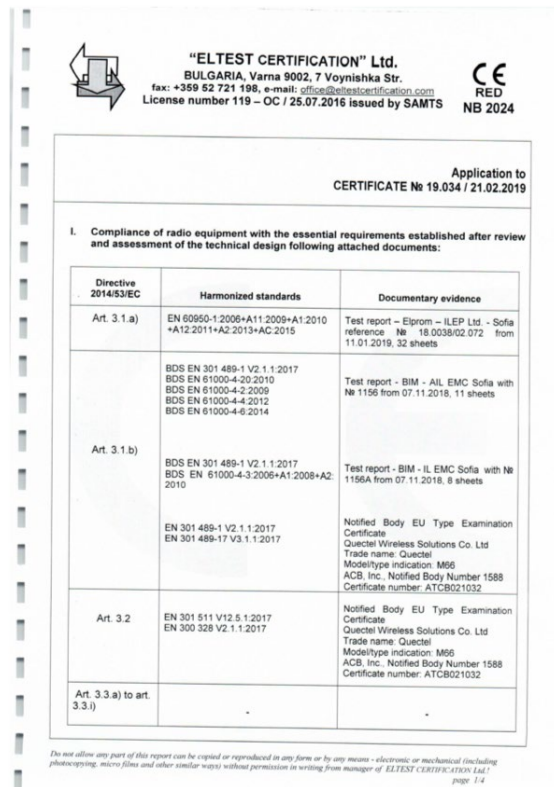
Meter Requirements

- » Meter pulse output needed
- Analog sensor with 4-20 mA output

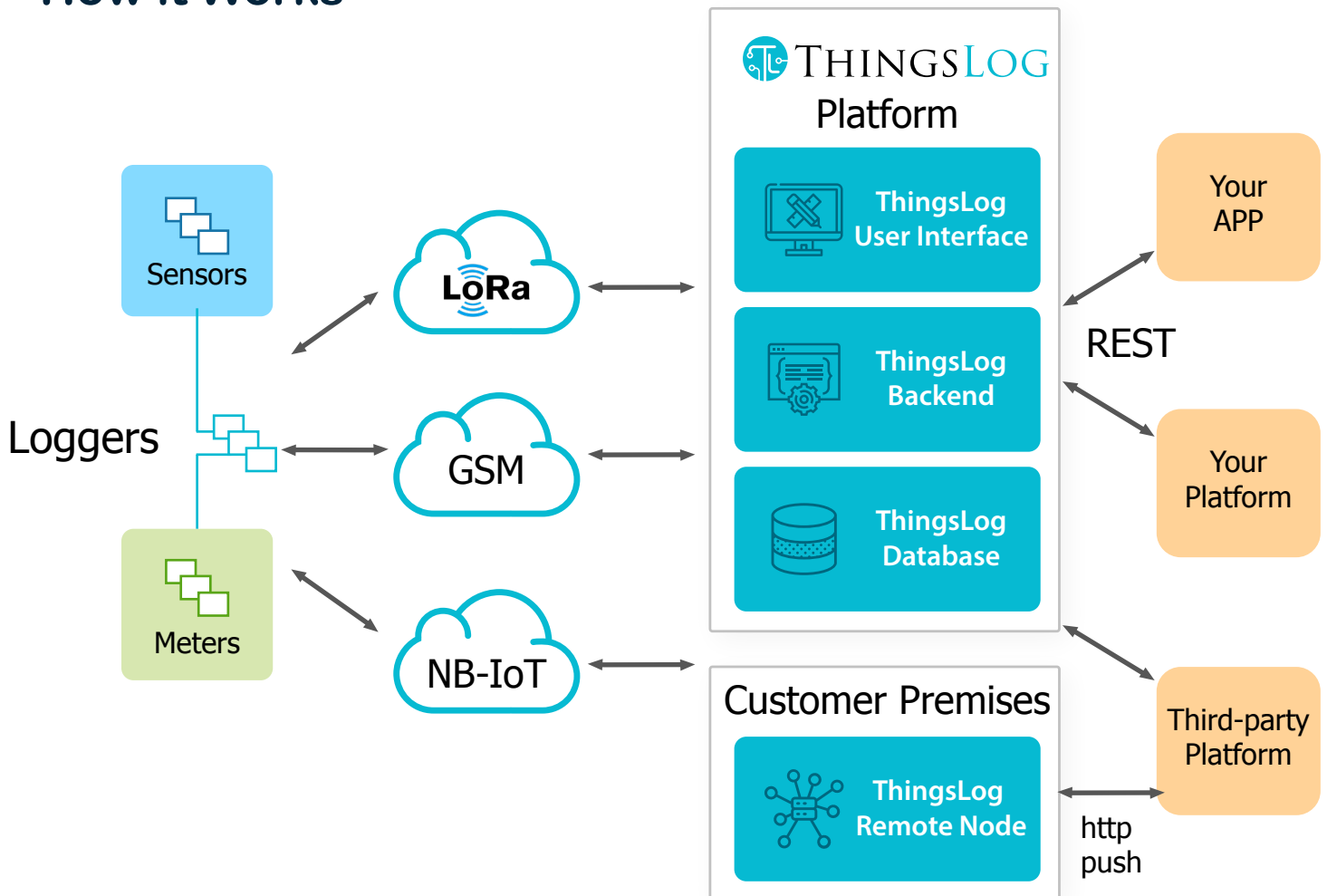
Features

- ✓ Frequency Bands: 850/900/ 1800/900MHz
- ✓ 2 analog inputs 4.20 mA
- ✓ 2 pulse metering inputs
- ✓ 2 ON/OFF optional inputs or outputs
- ✓ 12 bit ADC / precision 0.5%
- ✓ 3 x 1,5 V AA replaceable alkaline batteries (non-included)
- ✓ Battery life: 5+ years (6000 transmissions)
- ✓ IP68 level of moisture and dust protection
- ✓ With or without EEPROM
- ✓ Configurable metering and transmission periods
- ✓ Over-the-Air reconfiguration
- ✓ Ability to meter per minute and transmit per day
- ✓ 6 μ A consumption in sleeping mode
- ✓ Data transmission over 2G/GSM/GPRS
- ✓ Data is exposed through a REST API

Logger Certification



How it Works



ThingsLog Platform

Remote monitoring of water, gas, electricity, level, pressure and many other



Consumption monitoring as a service



Data management of meter / sensor readings



Device management and configuration



Battery and signal level monitoring



Data visualisation and analysis



REST API interface for integration with other platforms



Alarms and notifications



User friendly UI and app

Self documented REST API interface:
<https://iot.thingslog.com/swagger-ui.html>



Additional Services Upon Request



**Initial
set-up**



**Professional
services**



**Third-party
systems integration**



Training



Device pre-provisioning

GSM Data Logger LPMDL-1101

Ordering Options list

ORDERING CODE	DESCRIPTION
LPMDL-1101-2-reed	2 reed pulse inputs
LPMDL-1101-2-S0	2 S0 pulse inputs
LPMDL-1101-1-reed-1-S0	1 S0 and 1 reed pulse inputs
LPMDL-1101-2-reed-2-analog	2 reed or S0 pulse inputs and 2 analog inputs
LPMDL-1101-2-2-2	2 reed or S0 pulse inputs, 2 analog inputs, 2 ON/OFF
LPMDL-1101-custom	Custom

- » Reed pulse input is a Voltage free input port suitable for meters with "dry contact" or "passive contact" pulse outputs
- » S0 pulse input port is an open collector input for meters pulse with outputs as per EN 62053-31
- » Analog ports could be delivered in current 4-20mA or voltage 0.5-4.5V mode. In current mode the sensor will be measured in a low power way in voltage mode the sensor has to be powered by external source.
- » Each logger could be ordered also in a real time mode where it can read input values every second and to transmit in continuous mode every 10-60 seconds.

Delivery Terms

- » **30 Days** for 100+ QTY
- » **10 Working Days** for a Sample delivery
- » **EXW**

Package

- » Each device is offered **with a cable** (length options: 1, 2 or 3 meters and price: € 1 per meter) or **without a cable**
- » **Batteries** not included, ask for options

ThingsLog Platform Subscription

Subscription packages are reading based

A reading is one insert of the reading of the meter or sensor into the platform



Package Options

10k

10 thousands readings
per year

100k

100 thousands readings
per year

1M

1 million readings per
year

10M

10 million readings per
year

100M

100 million readings per
year

Subscription packages count for all customer's data loggers, e.g one subscription package spans across many loggers

SUBSCRIPTION PACKAGE	NUMBER OF READINGS
10K	10 000
100K	100 000
1M	1 000 000
10M	10 000 000
100M	100 000 000

Deployment Options

- » **Remote node** – ThingsLog configuration and device management, data is pushed to 3-rd party platforms
- » ThingsLog on prem – ThingsLog end to end platform deployed in customer premises
- » ThingsLog hosted – ThingsLog instance hosted in our own cloud
- » Ask for licensing and pricing

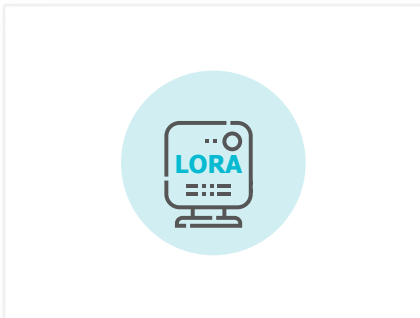
If you don't see your package don't hesitate to ask for a custom option on

 sales@thingslog.com

How to Calculate Platform Subscription

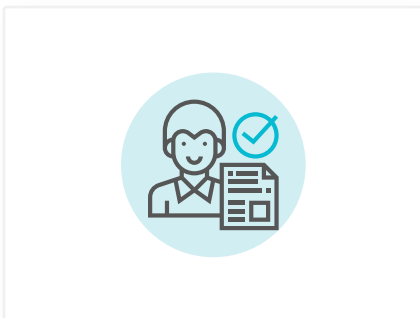
NUMBER OF DEVICES	READING INTERVAL	READINGS	TOTAL READINGS	PROPER PACKAGE
100	15 minutes	4 readings per hour 96 readings per day 35040 readings per year	3504000	Between 1M and 10M
100	1 hour	24 readings per day 8760 readings per year	876000	1M package

How to Order



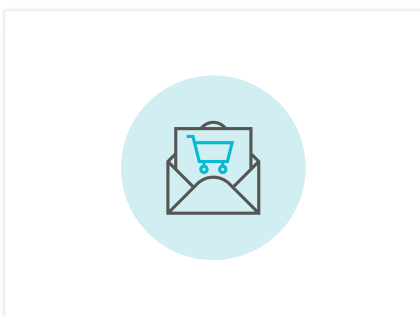
Step 1.

Choose the right data logger for your business case



Step 2.

Define your initial subscription package



Step 3.

Send us a purchase order sales@thingslog.com